

# ElkStooth



October, 2008

www.elkstooth.com

All-American Lodge  
1998-2004 State Award



## INSIDE:

- October Meeting Schedule ..... 2
- Secretary's Office .... 2
- Lodge of Sorrows .... 2
- Lapsation List ..... 2
- Membership Card Required! ..... 2
- Warm Hugs ..... 3
- Helping the Hungry ... 3
- Flu Shots ..... 3
- New ENF Chairman ... 3
- Annual Toy Drive .... 3
- Holiday of Hope ..... 4
- Elks Scholarships .... 4
- Hoop Shoot ..... 4
- Oktoberfest Celebration Flyer ..... 5 & 6
- Manager's Message ... 7
- Drink Specials ..... 7
- Door Greeters ..... 7
- Banquets ..... 8
- Calendar of Events ... 9
- Dinner Specials ..... 9

## Oktoberfest: Our Largest Annual Fundraiser



### A Message from the Exalted Ruler

By James Cusack, Exalted Ruler

Oktoberfest Sunday, October 19, is a great day at the Lodge. Enjoy German food, drinks and music. We will select our Oktoberfest raffle winners during the fest. You may purchase tickets from now until the day of the drawing. The winners do not need to be present at the drawing. The party and the raffle are open to all members and their guests. It's a great way to introduce perspective new members to the Lodge. The profits from this event are dedicated to improvements of our facilities. Please buy a ticket and invest in your lodge, while having a fun time doing so.

Another very important date is quickly approaching. On Tuesday November 4, our Lodge will have the annual District Deputy visitation. This is a big night; Elks from the other North District Lodges will attend our meeting and initiation. The Lodge will be closed to non-Elks at 5:00 pm.

cont. pg. 4

### Second Early-Bird Drawing

## \$1,000 Prize

Thursday, October 2 at 7 PM

### Fall Golf Outing

Thursday, October 9

Glenview Golf Course, Shermer Road

\$75.00 per golfer

Includes 18 holes of golf, golf cart, beer & brats on the turn.

Dinner back at the Elks Club.

Sign up at the Main Bar with payment in full.



## ACTIVITIES-EVENTS

### Oktoberfest Early-Bird Drawing: \$1,000

Thursday, Oct. 2 at 7 pm—stop by for dinner!

### Fall Golf Outing, Thursday, Oct. 9

Glenview Golf Course on Shermer Road. \$75/golfer

### Oktoberfest Sunday Celebration

Sunday, Oct. 19. Bar open at 3 pm. Strolling musician. Plus, authentic German band for listening and dancing. Dinner 4-9 pm. Drawing at 8 pm. See insert.

### District Deputy Visits #1526

Tuesday, November 4. members only after 5 pm.

### Turkey Shoot, Thursday, Nov. 20

All-day raffles for turkeys, booze and more.

### Wednesday Bingo - Doors Open at 4 pm

Free coffee and soft drinks, reasonable-priced snacks.

### All-Day Raffle

Thursday, Nov. 20, from 11 AM to 9 PM

Complimentary Turkey Sandwiches served at 3 & 7 PM





### Lodge Officers 2008-2009

Exalted Ruler ..... James Cusack  
 Leading Knight ..... Dolores Dean  
 Loyal Knight ..... Lee Burr Jr., PER  
 Lecturing Knight ..... Lawrence Kochan  
 Secretary ..... Donald Bahr, PER  
 Treasurer ..... Dale Multerer, PDDGER  
 Tiler ..... G. Bill Brown  
 Esquire ..... Don Knapp, PER  
 Inner Guard ..... Anthony Berardi  
 Chaplain ..... Richard Eirich, PDDGER  
 Organist ..... James Boyd

### Trustees 2008-2009

Chairman ..... Richard Lange  
 4th-year ..... George De La Mar  
 3rd-year ..... Gerald Smith, PER  
 2nd-year ..... Frank Hoef, PER  
 1st-year ..... Ronald Zuraski, PER

### Board of Directors 2008-09

Chairman ..... Lee Burr Jr., PER  
 Vice-Chairman .... Dudley Parenteau, PER  
 Secretary ..... Lawrence Kochan  
 Treasurer ..... William Ritchie  
 Director ..... Anthony Berardi  
 Director ..... George Brown  
 Director ..... Gerald Snarski

### Des Plaines Elks Club

Club Manager ..... Randy Menzies  
 E-mail ....RMenzies@desplaineselksclub.com

### Elks Tooth 2008-2009

Editor ..... Jeff Basko  
 Home Phone ..... 847 541-0556  
 E-mail ..... editor@elkstooth.com

**Copy deadline for Nov. is Oct. 15**

**Lodge Phone: 847 824-1526**

## "Elks Tooth"

An Official Publication of the  
 Benevolent and Protective  
 Order of Elks,  
 Des Plaines Elks Lodge #1526  
 Published at:  
 495 Lee Street  
 Des Plaines, IL 60016  
 Published monthly, with one  
 combined issue for July/August

## October Meetings

### Des Plaines Lodge Meetings

Tues Oct 07 Lodge Mtg. 7:30 pm  
**Initiation**  
 Tues Oct 14 Trustee Mtg. 7:00 pm  
 Tues Oct 21 Lodge Mtg. 7:30 pm  
 Tues Oct 28 Directors Mtg. 7:00 pm

### District Deputy Visitations

Wed Oct 01 Waukegan #702  
 Wed Oct 08 Chicago/Northshore #1316  
 Wed Oct 22 Elmhurst #1531  
**Tues Nov 04 Des Plaines #1526**



### Secretary's Office

By Lodge Secretary,  
 Donald Bahr, PER

Office Hours:  
 Tues-Fri 10 am - 12 pm  
 847-824-1526

We have reached the halfway point of our 2008-09-lodge year.

On 8/19/2008 we initiated 18 new members into our lodge. This makes a total of 31 new members year to date for our lodge. There are 24 candidates, at the time of this writing, to be Initiated on October 7, assuming attendance by all. These numbers sound impressive, and they are, but unfortunately our membership roster is headed for the loss column due to deaths and delinquency of membership dues.

Both the Lapsation and Membership committees have joined me in an effort to contact delinquent members and encourage them to renew their membership. Now we need to enlist the help of the general membership. To the right, is the lapsation list. Should you see a name on the delinquent list that you recognize, please help us by contacting that person yourself to encourage them to remain an Elk in good standing. You might make the difference as a concerned member. ☺

### Membership Card Required!

Our Lodge and Club are private. The Lodge and Club are for the use of our members and their guests. Your membership card is your key to enter the Lodge. In the restaurant and at the bar proudly show your card to the door greeter, the hostess, and the bartender. ☺

Visit Carl Weldon's "Chatter" at  
[www.desplaineselksclub.com](http://www.desplaineselksclub.com)

## Lodge of Sorrows

*"The clock of their day has stopped  
 and across its dial, motionless shadows  
 mark the hour of eleven. With us,  
 the golden hour of recollection."*

### Robert R. Bernardini

Birth: 03/30/1929  
 Initiated: 05/20/1997  
 Death: 07/31/2008

### John P. Duntemann

Birth: 11/08/1924  
 Initiated: 08/18/1998  
 Death: 08/25/2008

### Michael Orloff

Birth: 02/21/1921  
 Initiated: 03/17/1981  
 Death: 07/17/2008

### Leonard J. Rapala

Birth: 09/28/1918  
 Initiated: 03/27/1962  
 Death: 08/06/2008

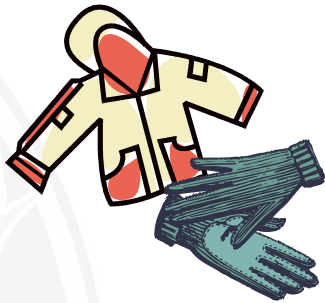
*Arrangements for our Lodge of Sorrows  
 Ritual for our deceased Members must  
 be initiated by the Member's family.  
 Contact the Lodge at 847-824-1526.*

### The following members have not paid their 2008-09 dues:

Anderson, Richard	Lein, David
Arey, Theodore	Lesak, Stephen
Arredia, Anthony	Lewandowski, Vince
Bassie, Daniel	London, Stanford
Bastian, Richard	Martin, Laura
Battles, Wilton	Meehan, Terrance
Becker, Thomas	Miske Jr, Joseph
Benjamin, Benedict	Morgan, Rosemary
Berresheim, Susan	Muehlenbeck, Robt
Black, Chester	Murphy, Patricia
Blackwell, Ursula	Muszynski, Irvin
Brucek, Richard	Olson, Ronald
Burman, Jay	Petersen, Harold
Charnota, Steven	Pirpiris, Ted
Chism, Doyle	Pry, Kalliope
Daly, Mary	Ranelli, Gloria
Dano, Arnold	Renda, Eugene
Dimeo, Ruth	Rolfe, John
Dowd, Joseph	Schneider, Robert
Draver, William	Schwind, Jean
Dsida, Douglas	Scimeca, Victor
Fredricks, Kenneth	Selby, Kay
Froula, Raymond	Severino, Ernest
Gernenz, Charlene	Simpson, Bob
Gibson, Donald	Skoiens, Gary
Hall, John	Stavros, James
Johnson, Vernon	Szumal, Robert
Kantrovich, Neil	Tracey, Robert
Kelly, Michael	Walsh, Joseph
Kita, Edward	Willhamer, Mildred
Kostos, Nickolas	Wolfe, Esther
Krisor, John	

# Warm Hugs for Winter

By Frank Burr, PER, Youth Activities Chairman



Once again the *Warm Hugs* program will be collecting new and used hats, gloves, scarves, and coats for donation to organizations working directly with needy families. Your donation can help make this winter a little warmer for those that cannot afford the necessary items to help

keep them warm and safe this winter. Please bring your donation to the Lodge before November 3. We plan to present them to the organizations at our lodge meeting on November 4.

Let's show those less fortunate how Elks Care – Elks Share. ❁

## Flu Shoots at the Lodge



October 18, 2008, the Lodge will have Flu Shot Day from Noon to 2:00 pm. Sign-up at the bar or call (773)763-5820. ❁

## New #1526 Elks National Foundation Chairman



PDDGER David Seaholm has been named Lodge #1526 Chairman for the Elks National Foundation (ENF). Please support his efforts in this important charitable function. ❁

## Annual Toy Drive Begins

By Frank Burr, PER, Youth Activities Chmn.

Do you know that for some parents, Christmas is one of the hardest times of the year for them? They're not worried about what to get their children for Christmas; they're facing the possibility that their children may not have gifts to open on Christmas Day.



However, there is a way for us to help these parents see the joy in their children's faces this Christmas morning. Please bring a new, unwrapped toy to the Lodge. Your donation of a simple toy will bring a smile to a child's face and joy to the hearts of their parents. The toys will be given to agencies working directly with needy families and children.

Please bring your donation to the lodge between Nov. 1 and Nov. 29, 2008. We will present the toys to the "Self-Help Closet & Pantry of Des Plaines" on Tuesday, Dec. 2, at our regular lodge meeting.

Show these families just how much Des Plaines Elks Care and Share. ❁

**Our Nation's Farmers produce enough food to feed most of the world's population, providing Americans with safe, plentiful, and affordable food.**

**Yet hunger is still a major problem in our Nation.**

Frank Burr, PER, Youth Activities Chairman

In Illinois, nearly 11 percent of all households (approximately 1.7 million people) do not have enough food and 3 percent experience the most severe form of food shortage: Hunger. Over 13 million children in our Nation live in households that do not have an adequate supply of food and 3 million children experience hunger on a daily bases.

Not even the elderly are protected. Almost 6 percent of elderly households in America are without an adequate supply of food; many experience hunger.

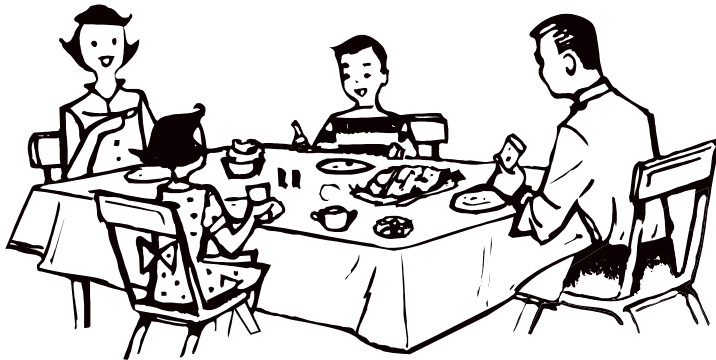
We ask for your help. Support the Red Basket Food Drive Program. The red baskets are available every day the lodge is open for your donation of cans and boxes of non-perishable food items. The Red Basket is also for special events. The food items collected are turned over to the *Self-Help Closet & Pantry of Des Plaines*, which handles the distribution.

To make a monetary donation, please mail your check to the lodge secretary with "food basket" entered into the memo space.

Let's bring hope to these Americans and show them that Elks Care – Elks Share.

# Holiday of Hope

By Frank Burr, PER, Youth Activities Chairman



Once again we will host the *Holiday of Hope* program, a holiday party for needy families living in the Des Plaines area. As in years previous, we work with the *Self-Help Closet & Pantry of Des Plaines* to identify a select number of families that will benefit from this event.

This year, we hope to increase the number of families to 20. The number is determined by the total amount of funds raised through sponsoring members.

Each child receives two wrapped gifts: an educational gift and a toy. The families receive a gift card from a local food store to purchase items for their Holiday meal.

To sponsor a family (\$100.00), send your donation to the Lodge Secretary with "Holiday of Hope" written in the memo space. If you would like to volunteer on the day of the event, please let me know.

## Elks Scholarships

By Bud Vaughn, PER, Scholarship Chmn.

The Elks National Foundation offers three types of scholarships:

The first scholarship is based on grades, activities and family income. It is offered to any qualifying senior living in our area. They are judged at the local, district, state, and national levels. Awards are distributed by the state, even if the student does not reach the next level. Last year, the Elks National Foundation awarded \$3 million dollars in scholarships nationwide.

The second scholarship is the Legacy Award. This is for Elks member's children, stepchildren, grandchildren, legally adopted children, and other variations too numerous to list. We receive very few applications for this scholarship.

The third scholarship is the Emergency Educational Grant. Grants can range up to \$4,000 per year, and can be renewed each year by re-application. This is only for children or stepchildren of deceased or disabled Elks members.

Applications are available at the lodge for all three scholarships. If anyone would like to help grade the applications, please contact me—it only takes 2-3 days.

Thank you. Bud Vaughn 847-259-2029 ☼

## Www.ElksTooth.Com

### Support the Elks National Foundation

The ENF is the Life-Blood of the Order. It's through this foundation that all national support is provided. This includes national programs and local support. Now you can donate on-line at [www.elks.org](http://www.elks.org) Website.

## B I N G O

### We Need BINGO Volunteers!

Members, Des Plaines Elks is in need of several volunteers to work **BINGO at least one Wednesday evening per month**. All volunteers start as Payout workers, but may advance to a Bingo Caller once familiar with the program.

BINGO directly benefits our lodge by generating funds necessary to help keep our dinner and drink prices reasonable. To sign up, call Larry Kochan at (847) 635-8993. Thank you.

## ER Message

cont. from pg. 1

All members should plan on attending the meeting that night. Let's make this visit very special.

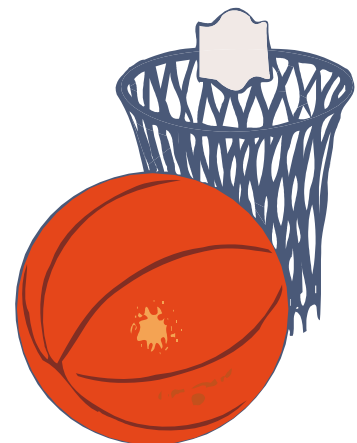
Every month I like to thank a chairman for a job well done. This month it is Marie Reale and her Door Greeters. They do a fabulous job. They always make us feel welcome with their smile and handshake, after reviewing our membership card. It is an essential and sometimes difficult job. It is also very rewarding. I know Marie is looking for more volunteers to become Greeters. Give door-greeting a try — you might like it.

In closing, please enjoy all our Lodge activities and attend a meeting. The Lodge and Club have a lot to offer, as does Elksdom; now is the time to act. If you have any questions or concerns let me know. My phone number is (773) 763-5820 and my e-mail is [sonotme1@yahoo.com](mailto:sonotme1@yahoo.com) ☼

## Hoop Shoot®

By Frank Burr, PER, Hoop Shoot Chmn.

Please Plan to Attend this years Hoop Shoot on Saturday, December 6, 2008 at Chippewa Middle School in Des Plaines.



Volunteers should be at the school around 8:30 am to help setup and review activities. Registration begins at 9:00 am; the first group of shooters will start at 9:30 am. A Drug Awareness table and Child ID table will be on display.

We need volunteers to help score and rebound. If you wish to help, please contact any Lodge Officer or myself. ☼

## Sponsor the Elks Tooth!

Purchase a Business Card Ad for only \$140 for six issues.

Contact the Editor at 847-541-0556

# Oktoberfest Sunday

Oktoberfest Sunday, October 19, 2008

Dinner seating from 4 PM to 9 PM

Strolling Musician from 4 PM to 7 PM — **\$10,000 Grand Drawing at 8 PM**



## Die Lustigen Musikanten

*Performing from 7 to 10 PM in the Banquet Hall*

# Oktoberfest Menu

## Special Old World Favorites

— All entrees served with Potato Pancake & Vegetable —  
 Soup - Chicken Noodle

### Entrees



Farmers Sausage Plate . . . . .	13.95
Bratwurst, Thuringer, Knockwurst, German Potato Salad, & Red Cabbage	
Wiener Schnitzel . . . . .	16.95
Tender steak dipped in egg batter, special breading, pan-fried in butter	
Schnitzel "A La Holstein" . . . . .	17.95
Served with Fried Egg and Anchovies	
Rouladen of Beef-Stuffed Beef Roll . . . . .	15.95
Bavarian Schweinefleisch . . . . .	16.95
Roast Pork Loin, Specially seasoned and served with Herb Dressing	
Bavarian Breast of Chicken . . . . .	13.95
Boneless Breast, Sautéed onions, mushrooms, simmered in a wine sauce	
Sauerbraten . . . . .	15.95
Marinated in red wine and vinegar, braised & simmer in its own juices, finished with selected herbs served with Spatzel	
Prime Rib of Beef . . . . .	18.95
14 oz. Cut, natural juices	
King Cut Filet Mignon . . . . .	19.95
10 oz. Topped with mushroom caps	
Broiled Lake Superior Whitefish . . . . .	14.95
Cooked with white onions & peppers	
Orange Roughy . . . . .	14.95
White Wine and Lemon	
BBQ Baby Back Ribs, Full Slab . . . . .	16.95

— All dinners served with homemade Apple Strudel w/ice cream —

## German Bier on Tap by the Pint

Hacker Pschorr Weisse . . . . .	5.50
Leinenkugel Oktoberfest . . . . .	3.50



# ELKS CLUB

847-824-1556  
847-824-2036 fax  
Randy@DesPlainesElksClub.com



Randy Menzies  
Elks Club Manager

## Manager's Message by Randy Menzies, Club Manager

October is a busy Month for the lodge. Our biggest fundraiser of the year is Oktoberfest. **The second Early-Bird Drawing is October 2 at 7:00 pm. You could win \$1,000.00!** Buy your ticket and help make this a sell out. At this point we have approximately 775 tickets sold. We need your help to sell out.

**Saint Vincent's** is having a **reunion** here on Sunday, October 5, from 1:00 pm to 6:00 pm. If you would like information on this event, call 847-824-1556 and ask for our Asst. Manager, Mitzie Lober.

Thursday, October 9 is our **Fall Golf Outing**, held this year at Glenview Golf Course on Shermer Road. The cost of \$75.00 per golfer includes 18 holes of golf, a golf cart, beer & brats on the turn, and Dinner at the Elks Club. Sign up at the Main Bar with payment in full. Tee times will be assigned, so make sure you leave your phone numbers with your reservations and check back.

Sunday, October 19 is our annual **Oktoberfest Celebration & Raffle**. The Bar opens at 3:00 pm and the Dining Room is open from 4:00 to 8:00 pm. We will feature a German menu. Enjoy **Strolling Music** by Eddie Schumeap, and featured performers, **Die Lustigen Musikanten**, (Merry music men in German) from 7:00 - 10:00 pm. Come dance and win a door prize. (Must be present to win door prizes,) The Main drawing will be held at 8:00 pm. You can win \$10,000! Buy one now — its not to late!

Looking ahead to Saturday, November 15, is the **Veteran's Dance**. This year, features a buffet of **Gourmet Hot & Cold Hors d'oeuvres**, and the musical entertainment of **Ed Collins** for listening and dancing enjoyment. Sign up at the Main bar with payment in full for only \$20 per person. More details in next issue of the **Elks Tooth**. Stop in for lunch or dinner and pickup a flyer.

Saturday, November 29, is the **Open House Christmas Craft Show** & more, from 10:00 am to 3:00 pm. If you're a Crafter, or would like to be one, check it out at the Elks Lodge. This is the day to stop. For information call 847-824-1556. ❁

### Oktoberfest Sunday October 19

This is our largest annual fundraiser for our facility. It fosters the improvements you see at the Club. We hope you have purchased a ticket and plan to attend. Door prizes will be awarded on the half-hour! ❁

### Second Early-Bird Drawing

# \$1,000 Prize

## Thursday, Oct. 2 at 7 PM

Grand Drawing on Sunday, Oct. 19, 2008

### Find Your Lucky Member Number!

If your member number appears in a sponsored ad or Club ad, stop by the Club and receive a \$10 gift certificate – good any-time at the Club!  
**Good Luck!**

### Drink Specials for October

**Tuesday:** Draft Beer Day.....\$1.25

**Wednesday:** Lambrusco Sangria .... 3.50

**Thursday:** Red Apple Martini ..... 3.75

**Friday:** Mai Tai Fusion Rum or Sky Infusion (Cherry & Coke) ..... 4.00

**Saturday:**  
Baileys Mint Chocolate & Coffee or Baileys Caramel Coffee..... 3.75

### October Door Greeters

Volunteers or Rescheduling:  
**Contact Marie Reale (847) 476-8700**  
Hours: 5:30 – 7:30 PM

#### Friday Evening

10/03 Louis D'Attomo  
10/10 Ann Barton  
10/17 Ken Pietranek  
10/24 Fred Gross  
10/31 Dan Fluett

#### Saturday Evening

10/04 Ruth Olson  
10/11 Margot Briars  
10/18 Casey Mironack  
10/25 Jim Estey

# Des Plaines Elks Club Banquets

The Des Plaines Elks Club prides itself on a tradition of outstanding value. Our menu selection includes a variety of dishes, each carefully prepared. We use the finest meats, poultry, vegetables and grains from the foremost purveyors in the business.

**Banquet Facilities** are available seven days a week with accommodations from 25 to 250 people. An excellent choice for Wedding Receptions, Birthday Parties, Anniversary Celebrations and Funeral Luncheons.

**Our Package Menu** includes a Four-Hour Bar Service (*we serve better brands*) with Complimentary Champagne or Wine served with Dinner (*unlimited*)



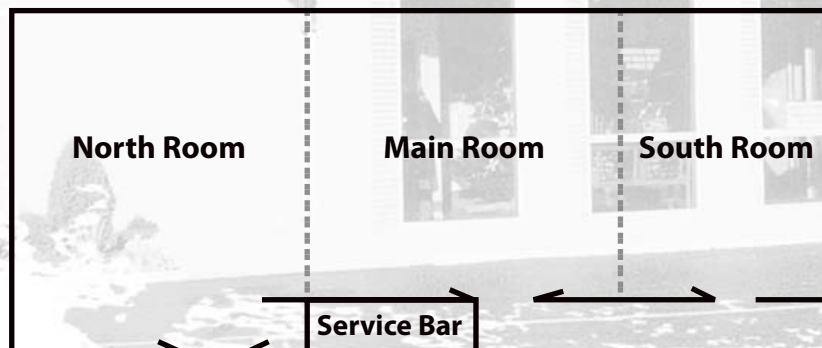
**Entrees Include:** Prime Rib, Filet Mignon, Ribeye Steak, New York Strip, Butt Steak, London Broil, Roast Sirloin of Beef, Roast Beef, Chicken, Orange Roughy, Baked Scrod, Lake Superior Whitefish, Roast Turkey and Family Style Dinners

**Side Fare:** Choice of Appetizers, Vegetable, Potato, Salad and Dessert

**Extras:** Hors d'oeuvres

**From \$31.00 to \$40.00 per plate.** Prices include complete dinner, four-hour bar and gratuities.

## Main Banquet Facility (Downstairs)



## Upstairs Banquet Facilities:

**PER Room:** 16-1/2 x 18 feet  
Accommodates 15 to 30 people

**Fireside Lounge:** 19-1/2 x 30-1/2 feet  
Accommodates 24 to 50 people

**Main Banquet Facility** (Downstairs) is Handicapped Accessible with wheelchair lifts in Lobby and Foyer.

**To Book Your Special Occasion,** contact Club Manager, Randy Menzies at 847-824-1526

**North Room:** 39 x 44 feet  
Accommodates 25 to 100 people

**Main Room:** 38 x 39 feet  
Accommodates 25 to 100 people

**South Room:** 19 x 44 feet  
Accommodates 15 to 50 people

**Open Room:** 100 x 44 feet  
Accommodates up to 250 people

# Elks Club Events **October**

SUNDAY	MONDAY	TUESDAY	WEDNESDAY	THURSDAY	FRIDAY	SATURDAY
<b>Oktoberfest Sunday - October 19</b> Burger & Chicken Night Every Wed. <b>Fish Fry Every Friday Night</b>			<b>1</b> Burger Special Corned Beef & Cabbage 8.95 All you can eat Fried Chicken 7.95 <b>Bingo 7 PM</b>	<b>2</b> 2nd Oktoberfest Drawing \$1,000.00 @7:00 PM Prime Rib 11.95 BBQ Pork Ribs Full Slab 12.95	<b>3</b> <b>Fish Fry</b> Arctic Perch 9.95 Scrod 9.95 Ocean Perch 7.95 Music & Dancing Ed Knaack Duo	<b>4</b> 8 Oz. Lobster Tail 17.95 Music & Dancing Ed Knaack Duo
<b>5</b> <i>Club Closed</i>	<b>6</b> <i>Club Closed</i>	<b>7</b> Danish Lobster 14.95 Butt Steak 10 Oz. 8.95 <b>Meeting 7:30PM</b>	<b>8</b> Burger Special Beef Stew 8.95 All you can eat Fried Chicken 7.95 <b>Bingo 7 PM</b>	<b>9</b> Glenview Golf Outing Brook Trout 8.95 Prime Rib 11.95 BBQ Pork Ribs Full Slab 12.95	<b>10</b> <b>Fish Fry</b> Arctic Perch 9.95 Scrod 9.95 Ocean Perch 7.95 Music & Dancing Chuck Masny	<b>11</b> King Crab Legs 16.95 Beef Rouladen 13.95 Music & Dancing Chuck Masny
<b>12</b> <i>Club Closed</i>	<b>13</b> <i>Club Closed</i>	<b>14</b> Danish Lobster 14.95 Rib eye Steak 10 oz. 8.95 <b>Trustee Meeting 7:PM</b>	<b>15</b> Burger Special Cajun Snapper 9.95 All you can eat Fried Chicken 7.95 <b>Bingo 7 PM</b>	<b>16</b> Prime Rib 11.95 BBQ Pork Ribs Full Slab 12.95	<b>17</b> <b>Fish Fry</b> Arctic Perch 9.95 Scrod 9.95 Ocean Perch 7.95 Music & Dancing Jim Boyd	<b>18</b> Chateaubriand Plate Style 15.95 Music & Dancing Jim Boyd
<b>19</b> <b>Oktoberfest</b> Bar Open at 3:00 PM Dining Rm 4:00 PM Music 7 - 10:00 PM Raffle at 8:00 PM	<b>20</b> <i>Club Closed</i>	<b>21</b> Danish Lobster 14.95 Sirloin Steak 10 Oz. 8.95 <b>Meeting 7:30 PM</b>	<b>22</b> Burger Special Grecian Pork Chop 8.95 All you can eat Fried Chicken 7.95 <b>Bingo 7 PM</b>	<b>23</b> Prime Rib 11.95 BBQ Pork Ribs Full Slab 12.95	<b>24</b> <b>Fish Fry</b> Arctic Perch 9.95 Scrod 9.95 Ocean Perch 7.95 Music & Dancing Larry Hulina	<b>25</b> Beef Wellington 14.95 Music & Dancing Larry Hulina
<b>26</b> <i>Club Closed</i>	<b>27</b> <i>Club Closed</i>	<b>28</b> Danish Lobster 14.95 Roast Pork & Dressing 8.95 <b>Director Meeting 7 PM</b>	<b>29</b> Burger Special All you can eat Fried Chicken 7.95 <b>Bingo 7 PM</b>	<b>30</b> Prime Rib 11.95 BBQ Pork Ribs Full Slab 12.95	<b>31</b> <b>Fish Fry</b> Arctic Perch 9.95 Scrod 9.95 Ocean Perch 7.95 Music & Dancing Jim Boyd	<b>1</b> Jumbo Coconut Shrimp 14.95 Music & Dancing Jim Boyd

THE DES PLAINES ELKS CLUB RESERVES THE RIGHT TO WITHDRAW OFFERS DUE TO TYPOGRAPHIC ERRORS.

## Complimentary Hors d'oeuvres Served 4-7 PM Tuesday-Saturday at the Main Bar

Club open Sundays for Parties and Banquets. Call Club Mgr. Randy Menzies for details at 847-824-1556.

## Have You Purchased Your Oktoberfest Ticket Yet?

PHONE: (847) 827-2181  
FAX: (847) 390-7643

**DANIEL J. DOWD**  
*Attorney at Law*

DOWD, DOWD & MERTES, LTD.  
701 LEE STREET, SUITE 790  
DES PLAINES, ILLINOIS 60016

Cabinets Bathrooms 10451 Kitchens  
Rec. Rooms Plumbing Ceramic  
Electrical Custom Tile

**Jeff Lipman Construction, Inc.**  
*Quality is our game!*

**Jeff Lipman**  
(847) 657-8990 Whirlpool Tubs  
Cell (847) 208-8998 Custom Tops

# Lovejoy

**Home Care Services**  
*Providing Quality Care Givers*

Live-in and Hourly Service Available Contact us at (773) 202-2615

### Please Support our Sponsors



**Lippers Carpet Cleaning**  
*Carpet & Upholstery*  
Residential • Commercial • Auto

8698

Off-Duty Fireman

**Dave Lipp**  
(773) 244-9027

### Sponsor the Elks Tooth for only \$140

## Sponsor the Elks Tooth!

Purchase a Business Card Ad for only \$140 for six issues.

Contact the Editor at 847-541-0556

### Please Support our Sponsors

**AHLBECK & COMPANY**  
CERTIFIED PUBLIC ACCOUNTANTS

Thomas H. Ahlbeck, CPA  
Dirk T. Ahlbeck, CPA  
Amy J. Sullivan, CPA

1665 ELK BOULEVARD TEL: 847/824-4000  
DES PLAINES, ILLINOIS FAX: 847/824-4012  
60016-4798

11381

**Sponsor the Elks Tooth!** Business card ads are only \$140 for six issues. Contact the Editor, Jeff Basko at 847-541-0556



**Polona (Polly) Filpi**  
REALTOR®  
Lifetime Million Dollar Salesperson



**McMullen Real Estate, Inc.**  
CENTURION® Office, 1987-2005

6400 N. Harlem Avenue  
Chicago, Illinois 60631

Residence (847) 292-0006  
Cell (773) 718-8800

Each office is Independently Owned and Operated

11120



## Frank's Home Repair

Frank Witkus 847 894-0359

- Free Estimates
- Interior Painting
- Exterior Painting
- Plumbing
- Maintenance
- Electrical
- Honey-Do List
- Minor Remodeling
- Door and Window Replacement
- Free Fishing Tips

*"I will repair what you have attempted"*



330 E. Northwest Highway, Mt. Prospect, IL 60056  
Office: (847) 259-0202 [www.IllinoisProperty.com](http://www.IllinoisProperty.com)  
E-mail: James.Grady@comcast.net

**RE/MAX®**  
**Suburban**  
**Jim Grady, GRI**  
**Broker/Manager**

*Whether you're buying or selling a home, choose RE/MAX Suburban for the professional edge.*



### Des Plaines—Lovely Brick Ranch! \$289,900 ▶

This home features newer windows, soffit and fascia, roof, furnace and a/c. Home is in very good condition! Classic custom woodwork, finished basement with den or office and lots of storage! Room for all your plants with an attached greenhouse and covered back porch!



**Des Plaines—Best Value in Town!** Charming 3-bedroom home with beautiful hardwood floors, raised nook off living room and 2nd floor laundry. Updated kitchen w/breakfast bar, newer furnace, A/C and windows. Insulated 2 car garage and huge deck. Great location! **\$269,000 ▶**



### Des Plaines—In the Heart of Town! \$216,900

Perfect 1 bedroom Condo just 2 blks to Metra train, Pace bus, grocery shopping, more! Situated in quiet area, close to forest preserve. Open fir plan, good view, beautiful bamboo flooring. Walk-in closet in BR plus storage room in heated garage. Low assoc fee incl heat and water!

## Losing a Loved One.

You feel at your worst, but have so much to plan.

Let us help simplify your luncheon.

The Des Plaines Elks Club is available Monday through Saturday for any type of luncheon or dinner following a funeral or memorial service. Our Club is renown for its pleasant atmosphere and good food.

Our facility accommodates 25–250 people and is located only minutes from All Saints Cemetery, Ridgewood Cemetery, and Memory Gardens. Complete bar service is available. And, you're billed only for the number of people in attendance.

### Funeral Luncheon Menu

Roast Prime Rib of Beef .....	\$13.95
Roast Sirloin of Beef Au Jus .....	10.95
Seasoned Boneless Chicken Breast .....	10.95
Broiled London Broil .....	11.95
Family Style Beef, Chicken and Mostaccioli	
All-You-Can-Eat .....	13.95

*All entrees include rolls and butter, potato or pasta, vegetable salad, desert and beverage.*

**— Bar Service Available —**

**Des Plaines Elks Club** 495 Lee Street, Des Plaines, IL 60016  
tel 847 824-1556 | fax 847 824-2036

Des Plaines Elks Lodge No. 1526  
495 Lee Street  
Des Plaines, IL 60016  
**POSTMAN: TIME-SENSITIVE DATES. PLEASE DELIVER AT ONCE.**

Non-Profit  
Organization  
US Postage  
**PAID**  
Permit No. 7  
Des Plaines, IL